

How to Install TeleNav

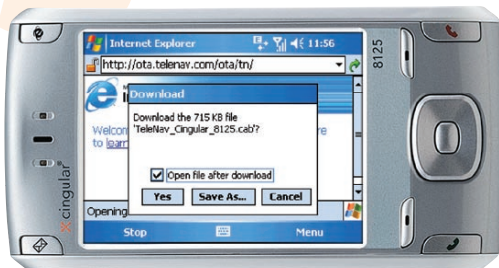
1. Open the Windows Start Menu. Highlight the "Internet Explorer" icon, and press the center key to select it.



2. Enter the following URL: "ota.telenav.com/ota/tn/cingular" and press the left soft-key for "Go".



3. When asked if you would like to download the file for the Cingular 8125, select "Yes".



4. After seeing the download confirmation page, click 'OK' to close the window.



Note: If you are downloading TeleNav GPS Navigator to the Cingular 8525, the download confirmation screen will prompt you to download an application named "TeleNav_Cingular_8525.cab". When asked to download the file, select "Yes".

Starting TeleNav

1. Once TeleNav has downloaded, open the start menu and select "Programs".



2. Select TeleNav in the programs menu. TeleNav will launch and present its splash screen.



3. Enter your 10 digit phone number and password that was sent to you when you signed up for service.

