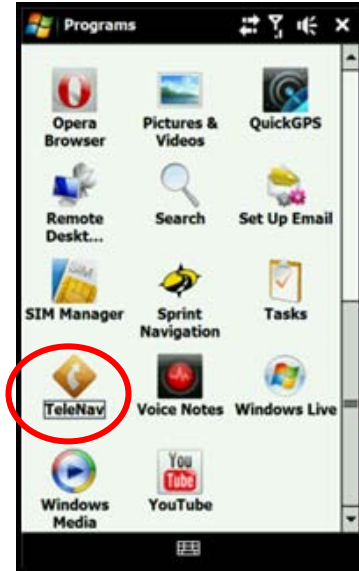


## Quick-Start Guide for T-Mobile HTC Rhodium

### Running TeleNav GPS Navigator v5.5

TeleNav GPS Navigator comes preloaded on your device. Follow the instructions below to launch the application.

1. Go to Start Menu >> Programs and tap the TeleNav icon.



2. The TeleNav GPS Navigator splash screen appears.

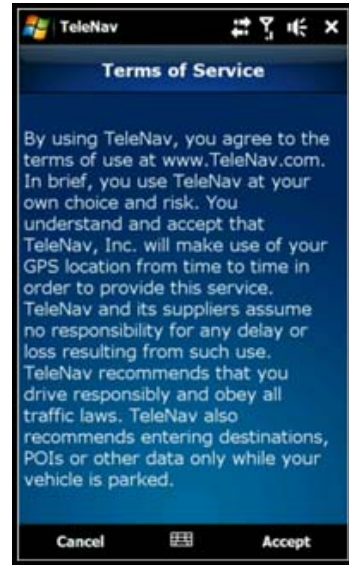
**NOTE:** On subsequent launches, if a newer version of TeleNav GPS Navigator is available, you will see a prompt to upgrade right after the splash screen. If you choose to upgrade, follow the on-screen prompts. If not, tap "Remind Me Later" to continue using the application.



Customer Support: 1-888-353-6284

## Quick-Start Guide for T-Mobile HTC Rhodium

3. The Terms of Service screen appears. Tap **Accept** to continue if you agree to the terms.



4. Your phone number is pre-populated on the Login screen. Fill in your name and email.

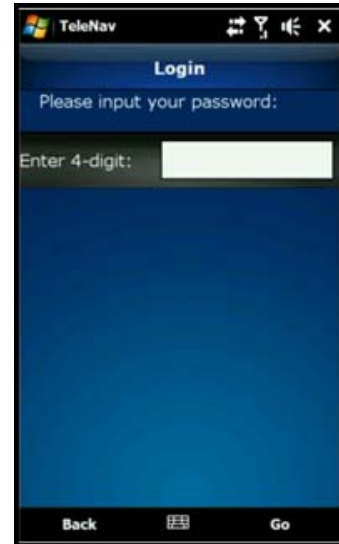


Customer Support: 1-888-353-6284

## Quick-Start Guide for T-Mobile HTC Rhodium

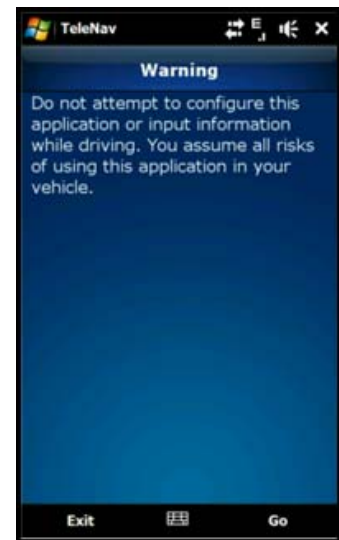
5. The application may prompt you to provide a password. Enter your password and tap **Go** to continue. For help with your password, please contact Customer Support.

**NOTE:** If this is the first time you are using the TeleNav Navigator application, you will be offered a 14-day free trial on the next screen. After the trial ends, you will receive on-screen instructions on how to sign up for a subscription plan.



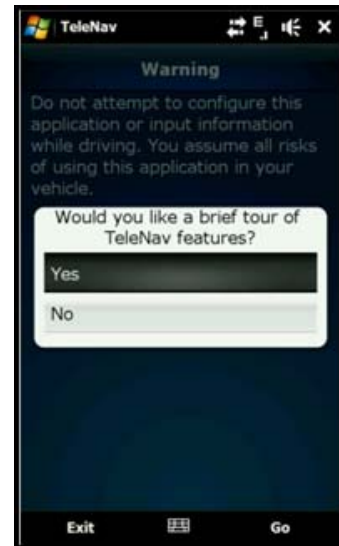
6. The Warning screen appears. Tap **Go** to accept this warning and start TeleNav GPS Navigator.

**NOTE:** Tap **Exit** to reject this warning and exit application startup.



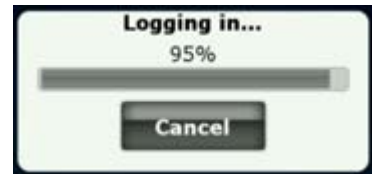
## Quick-Start Guide for T-Mobile HTC Rhodium

7. The first time you launch TeleNav, you will be offered a brief tour. If you decide to skip the tour now, you can always launch it in Tools & Extra >> Product Tour.



8. As you use the TeleNav Navigator application, you may see an alert screen similar to that shown on the right. Do not interact with the device until it has finished updating.

When TeleNav is using data service to contact the TeleNav servers, it will present a message such as: a) Reading GPS, b) Waiting, c) Sending, d) Receiving, and e) Logging in.



9. You will next come to the TeleNav GPS Navigator Main Menu. You can now select the feature you would like to use.



Customer Support: 1-888-353-6284