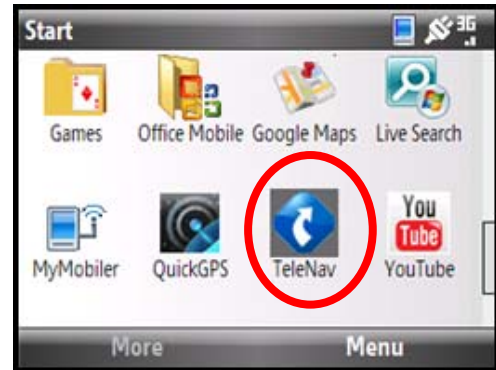


Quick-Start Guide for T-Mobile – Windows Mobile SmartPhones

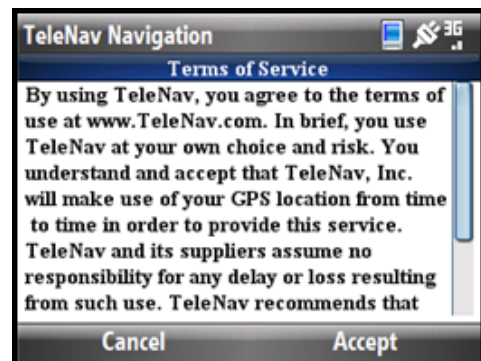
Running TeleNav GPS Navigator v5.5

TeleNav GPS Navigator comes preloaded on your device. Follow the instructions below to launch the application.

1. Go to the **Start** Menu and click the TeleNav icon.

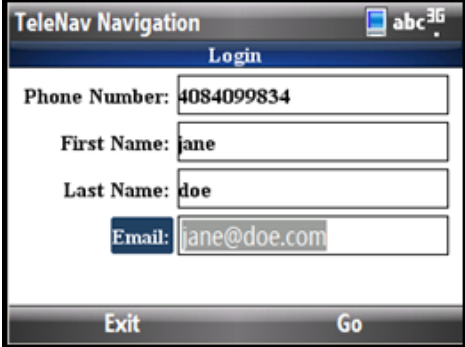


2. The TeleNav GPS Navigator splash screen appears.
3. **NOTE:** On subsequent launches, if a newer version of TeleNav GPS Navigator is available, you will see a prompt to upgrade right after the splash screen. If you choose to upgrade, follow the on-screen prompts. If not, choose "Remind Me Later" to continue using the application.
4. The Terms of Service screen appears. Choose **Accept** to continue if you agree to the terms.



Quick-Start Guide for T-Mobile – Windows Mobile SmartPhones

5. Your phone number is pre-populated on the Login screen. Fill in your name and email address.



TeleNav Navigation

abc 3G

Login

Phone Number: 4084099834

First Name: jane

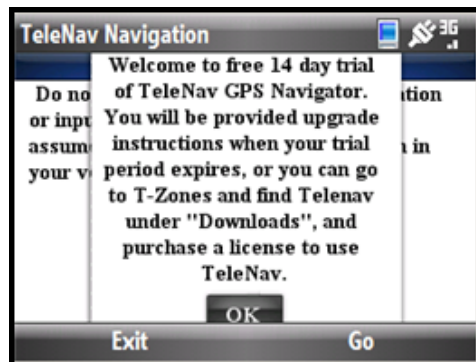
Last Name: doe

Email: jane@doe.com

Exit Go

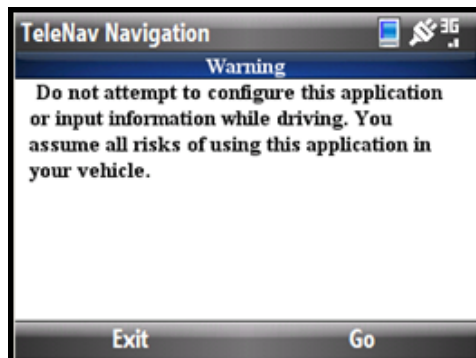
6. If this is the first time you have using the TeleNav Navigator application, you will be offered a 14-day free trial. After the trial ends, you will receive on-screen instructions on how to sign up for a subscription plan.

NOTE: The application may prompt you to provide a password when you launch your subscription plan for the first time. For help with your password, please contact Customer Support.



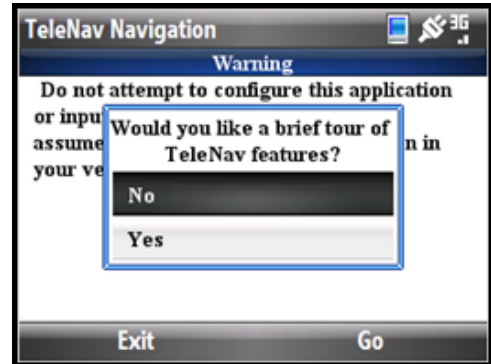
7. The Warning screen appears. Choose **Go** to accept this warning and start TeleNav GPS Navigator.

NOTE: Choose **Exit** to reject this warning and exit application startup.



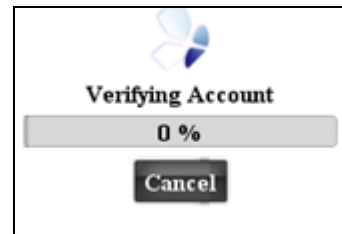
Quick-Start Guide for T-Mobile – Windows Mobile SmartPhones

8. The first time you launch TeleNav, you will be offered a brief tour. If you decide to skip the tour now, you can always launch it in Tools & Extra >> Product Tour.



As you use the TeleNav Navigator application you may see an alert screen similar to that shown on the right. Do not interact with the device until it has finished updating.

When TeleNav is using data service to contact the TeleNav servers, it will present a message such as: a) Reading GPS, b) Waiting, c) Sending, d) Receiving, and e) Logging in.



9. You will next come to the TeleNav GPS Navigator Main Menu. You can now select the feature you would like to use.

